

BRIDGNORTH LIVESTOCK MARKET

WEEKLY REPORT – 22.11.22



110 PRIME CATTLE

Auctioneer – Mark Burgoyne 07831 192603

It was great to see a few more cattle penned this morning with better clean numbers but with bull numbers still on the low side. A firm trade from start to finish with Christmas demand starting to kick in. All cattle sold from 179p/kg to 318p/kg to average 261p/kg on the lot.

Small steer entries sold to a high of 285p/kg with heavier bullocks to £1,770 in the lump.

Very strong heifer numbers sold to a high of 318p/kg with eleven females 300p/kg or above. Heavy females sold to a top of £1,776.

A sharp trade on Black and White bulls which looked better sold than the continentals in general. Few best shapes sold to a high of 244p/kg with Black and Whites selling to 215p/kg.

Only 4 cows forward, with two meatier and two ultra-plain types, saw the best selling to 148p/kg for Angus crosses at 762kg.

87 CLEAN CATTLE

11 STEERS SOLD TO OV. AV. 254P/KG

Best shapes from Andrew Preece sold Limmies to 285p/kg for 606kg, with two Lims from William Rodenhurst selling his pair both at 276p/kg. Handy weight Blues sold to 256p/kg from 'Mrs B'. Heavy steers to £1,769.70 again from the Preece stable.

76 HEIFERS SOLD TO OV. AV. 261P/KG

Six superstar Limmies from Evans (Curdale) sold to a high of 318p/kg for 552kg with a 520kg model to 311p/kg and another to 308p/kg. They also achieved top price per head at £1,776.05 for 596kg Limmie. 504kg Lims from John Hewitt took second spot at 312p/kg. Roger Jordin sold his best beast to 309p/kg for 506kg, with 540kg Lims from Mulberry Homes selling to 305p/kg. Any heifers with finish and meat saw a good level of demand.

ONLY 23 BULLS SOLD TO OV. AV. 219P/KG

Limousins from Richard Morgan headed this section at 244p/kg for 620kg with Charlie Lloyd and Ian Moreton both achieving 236p/kg for their best. Overage Charolais sold to £1,713.32 again from Richard Morgan.

Friesians topped at 215p/kg for 598kg from James Woolrich with others to 214p/kg from David Preece and Charlie Lloyd.

GOOD ENTRIES NEEDED FOR THE CHRISTMAS PRIMESTOCK SHOW NEXT TUESDAY PLEASE

STEERS P/KG

285p/kg	606kg	18m	LIMx	AW Preece
276p/kg	574kg	15m	LIMx	W Rodenhurst & Son
276p/kg	580kg	15m	LIMx	W Rodenhurst & Son
256p/kg	522kg	14m	BRB	C Burgoyne
255p/kg	694kg	18m	LIMx	AW Preece

STEERS £/HEAD

£1769.70	694kg	18m	LIMx	AW Preece
£1727.10	606kg	18m	LIMx	AW Preece
£1660.80	692kg	17m	SMx	AW Preece
£1600.80	580kg	15m	LIMx	W Rodenhurst & Son
£1584.24	574kg	15m	LIMx	W Rodenhurst & Son
£1532.16	608kg	19m	BRB	CPB Rowson

HEIFERS P/KG

318p/kg	552kg	19m	LIMx	RC Evans (Curdale)
312p/kg	504kg	20m	LIMx	JL Hewitt
311p/kg	570kg	19m	LIMx	RC Evans (Curdale)
309p/kg	506kg	18m	LIMx	W Jordin & Son
308p/kg	576kg	18m	LIMx	RC Evans (Curdale)
305p/kg	540kg	16m	LIMx	Mulberry Homes Ltd
302p/kg	508kg	18m	LIMx	EP Parkes & Sons
302p/kg	494kg	20m	LIMx	EP Parkes & Sons
302p/kg	534kg	19m	LIMx	W Jordin & Son
300p/kg	552kg	17m	LIMx	W Jordin & Son
300p/kg	574kg	18m	LIMx	RC Evans (Curdale)
300p/kg	574kg	18m	LIMx	RC Evans (Curdale)
299p/kg	514kg	18m	LIMx	EP Parkes & Sons
298p/kg	596kg	17m	LIMx	RC Evans (Curdale)
291p/kg	498kg	17m	LIMx	EP Parkes & Sons
291p/kg	570kg	23m	LIMx	DO Jones Ltd
290p/kg	536kg	19m	LIMx	W Jordin & Son
290p/kg	568kg	18m	LIMx	Mulberry Homes Ltd

HEIFERS £/HEAD

£1776.08	596kg	17m	LIMx	WJ Jones & Co
£1774.08	576kg	18m	LIMx	RC Evans (Curdale)
£1772.70	570kg	19m	LIMx	RC Evans (Curdale)
£1755.36	552kg	19m	LIMx	RC Evans (Curdale)
£1738.88	608kg	23m	BAX	LH Dalton & Son
£1722.00	574kg	18m	LIMx	RC Evans (Curdale)
£1722.00	574kg	18m	LIMx	RC Evans (Curdale)
£1721.50	626kg	18m	LIMx	C Burgoyne

BULLS P/KG

244p/kg	620kg	19m	LIMx	LR Morgan & Sons
236p/kg	568kg	13m	BAX	SB Lloyd & Son
236p/kg	520kg	18m	SMx	J & E Moreton
233p/kg	614kg	14m	BRB	CPB Rowson



Livestock & Auction Centre, Tasley, Bridgnorth, Shropshire, WV16 4QR

T: 01746 762 666 | F: 01746 767 475

E: enquiries@nockdeighton.co.uk | www.nockdeightonagricultural.co.uk

BULLS £/HEAD

£1713.32	812kg	32m	CHx	LR Morgan & Sons
£1512.80	620kg	19m	LIMx	LR Morgan & Sons
£1430.62	614kg	14m	BRB	CPB Rowson

DAIRY BULLS P/KG

215p/kg	598kg	17m	FR	JH Woolrich
215p/kg	606kg	13m	MONT	SB Lloyd & Son
214p/kg	568kg	13m	FR	A Preece & Son
214p/kg	544kg	18m	FR	JH Woolrich
214p/kg	538kg	13m	FR	SB Lloyd & Son

DAIRY BULLS £/HEAD

£1302.90	606kg	13m	MONT	SB Lloyd & Son
----------	-------	-----	------	----------------

OTM COWS P/KG

148p/kg	762kg	119m	AAx	DO Jones Ltd
137p/kg	728kg	113m	AAx	DO Jones Ltd

OTM COWS £/HEAD

£1127.76	762kg	119m	AAx	DO Jones Ltd
£997.36	728kg	113m	AAx	DO Jones Ltd

750 LAMBS

Auctioneer – Martin Clack 07977 067519

The smallest entry of lambs for many months, possibly a result of Monday's biblical rain! Trade would be around 2p/kg up on last week, quite remarkable with almost all the lambs presented wet.

Best lambs to 286p/kg for 40kg Beltex from Pete Morris with retail butchers looking to purchase quality finished lambs.

Heavier lambs to £140.80 for 55kg Texels from Sarah Levi and 53kg Texels from Peter Kirton at 257p/kg.

The general quality of lighter lambs would be varied mostly Welsh which sold to 220p/kg. Continental sired lambs under 40kg to 260p/kg for 38kg.

MORE LAMBS REQUIRED EVERY WEEK

Contact Martin Clack on 07977 067519 or
Ollie Clack on 07891 343673.

Top Prices p/kg:

286p/kg	40.5kg	IGC Morris
284p/kg	41.0kg	IGC Morris
266p/kg	42.5kg	AG Kirton & Son
261p/kg	44.5kg	DE & C Evans
261p/kg	41.0kg	SW & S Moss
261p/kg	44.0kg	DE & C Evans

Top Prices £/Head:

£140.80	55.0kg	S Levi
£136.20	53.0kg	AG Kirton & Son
£135.00	54.0kg	SW & S Moss
£132.00	52.0kg	JA Williams
£131.80	51.5kg	CT Foulkes

522 EWES

Auctioneer – Martin Clack 07977 067519

A similar entry to last week and trade much firmer with Suffolk x ewes to £141 from Mark Lloyd and Continental ewes lacking size to £134 for a small but very curvy Texel.

Strong ewes continue to be sought after with meated ever in demand.

North Country Mule ewes showed remarkable improvement to £116.50 for Mules from Gaz Davies and several pens trading around £100.

Hill ewes to £46.50 improved Welsh, small Cheviot types to £62.50 and small Welsh Mountain £30.

5 Beltex/Texel Rams at £140 and small plain Continentals to £91.

MORE EWES REQUIRED EVERY WEEK WITH VERY STRONG BUYING SUPPORT FOR ALL CLASSES OF STOCK

Top Prices £/Head:

£141.00	Suffolk	THJ Lloyd
£140.00	Texel	IGC Morris
£134.00	Suffolk	JA Williams
£134.00	Texel	S Brown
£134.00	Texel	RH Gregory

STORE SALE REPORT – FRIDAY 18th NOVEMBER

STORE CATTLE

An improved cattle trade across the board with all grades, types and shape of cattle attracting considerable interest.

A single Hereford cow and calf realised £920 with steers to £1,300 for 640kg, 25 month British Blue from Jim Squires and 24 month Limousin to £1,180. Heavy dairy bred steers to 208p/kg with 400kg Welsh Black around 200p/kg.

The majority of the entry comprised of heifers which topped at 250p/kg. 19-month 440kg South Devon £1,100, 14 month Blonde £1,100 and 24 month Angus £1,010. Plenty of demand for good shaped Continental heifers.

Small 200kg cattle with age traded around £500 with 20 month Hereford bulls to £1,050.

STEERS

£1300	640kg	25m	BB	A Squires
£1300	626kg	22m	BB	DR Price
£1190	572kg	22m	BB	DR Price
£1180	640kg	24m	LIM	A Squires

HEIFERS

£1100	440kg	19m	SD	A England
£1100	445kg	14m	BA	A England
£1010	605kg	24m	AA	A Squire
£950	462kg	20m	BB	A England

500 STORE SHEEP

Store lambs get dearer every week with a sale average of £86.50 for an entry of mainly longer term lambs.

Texel x lambs from WJ Rogers & Partners to £98, Suffolk x Mule lambs from Andrew Penny to £97 and Charollais lambs from Will Westwood to £95. Smaller well bred, but definitely long term projects £80 to £88 with lean small lambs almost all over £70.

£98.00	Texel	WJ Rogers & Partners
£97.00	Suffolk	NM Penny & Son
£95.00	Charollais	W Westwood
£88.00	Texel	WJ Rogers & Partners
£85.00	Suffolk	NM Penny & Son

CHRISTMAS FATSTOCK SHOW

NEXT TUESDAY 29th NOVEMBER 2022

Entries by

THURSDAY 24th NOVEMBER 2022

AT 5.00pm

Contact: Mark Burgoyne or Martin Clack

STORE SALE

To be held on

FRIDAY 2nd DECEMBER 2022

Entries invited by 12.00 noon on
Monday 28th November

Contact: Mark Burgoyne 07831 192603
Martin Clack 07977 067519

FOR RENT



OFFICE PREMISES WITH WAREHOUSE/STORAGE
The Old Navy Building, Ditton Priors, Bridgnorth, WV16 6SU

Office & Storage Premises (with potential)

- Net Internal Area approx. 465m²
- Rural location situated between Bridgnorth and Ludlow
- Close proximity to Ditton Priors Trading Estate
- WC & Kitchenette facilities
- Former Navy building and latterly occupied for office and storage uses

GUIDE PRICE: OFFERS OVER £26,000 PER ANNUM

FOR SALE BY PRIVATE TREATY



10.12 ACRES (4.096 HECTARES) ACCOMMODATION LAND
Shackerley Farm, Albrighton, Wolverhampton, WV7 3AB

**A LEVEL, PRODUCTIVE PARCEL OF TEMPORARY PASTURE LAND,
RECENTLY RESEED**

- Located within a short distance of Albrighton
- Very good roadside access
- Close to the Monarch's Way

GUIDE PRICE: OFFERS OVER £150,000

ANTIQUES/FURNITURE DEPARTMENT

Our Aim: To focus on breaking down house clearances to one-off specialist items to manipulate the market and gain the most profitable outcome for you.

Located in the Bridgnorth Sale Room, Nock Deighton Agricultural LLP conducts two sales a month on the 1st and 3rd Wednesdays of the month.

We charge a standard rate for **vendors** of 17.5% + VAT for items sold. For **purchases**, the buyer's premium is 12.5% + VAT.

If you have any items to sell, want to declutter or have a valuation, please do not hesitate to get in contact – our services include house clearances to one-off appraisals.

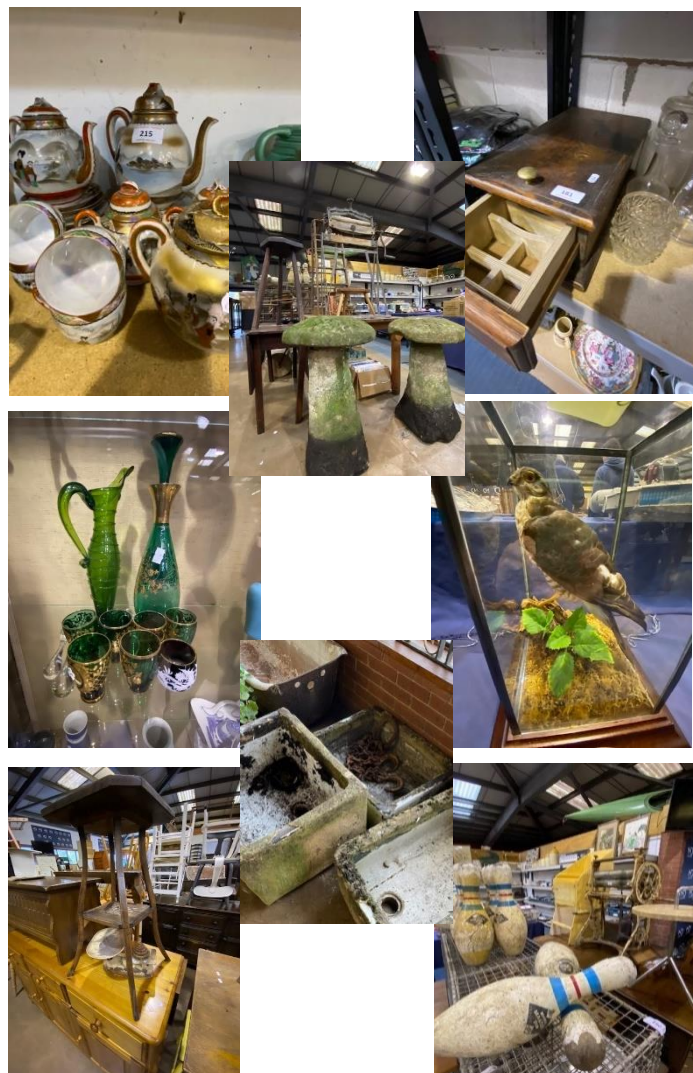
The next Furniture/Antiques Sale will be held on

Wednesday 7th December 2022

Viewing on Monday 5th December and
Tuesday 6th December
(9.00 am – 4.00 pm)

The auction will be held on-line at
www.easyliveauctions.com
and live in our Bridgnorth Sale Room

Some of the items sold in last week's sale



CHRISTMAS PRIMESTOCK SHOW

To be held on:
TUESDAY 29th NOVEMBER 2022

Cash Prizes, Rosettes, Silverware

Grateful thanks to all our Sponsors: HSBC, Lanyon Bowdler, FBC Manby Bowdler, Meadons Insurance, NFU Mutual, Severn Edge Vets, Hutchinsons, Danagri-3S, Farm & Garden Machinery, Bennetts Car Parts, Tallis Amos Group

Cattle Classes:		<u>1st</u>	<u>2nd</u>
Class 1	Best Heifer up to 500kg	£30	£20
Class 2	Best Heifer 500kg and above	£30	£20
Class 3	Best Steer up to 500kg	£30	£20
Class 4	Best Steer 500kg and above	£30	£20
Class 5	Best Pair of Heifers	£30	£20
Class 6	Best Pair of Steers	£30	£20
Class 7	David Deighton Cup for Best Smallholder's (100 acres or less) for Steer/Heifer	£30	£20
Class 8	Marlene Childes Cup for the Best Bull	£30	£20
Class 9	Champion Class, Nock Deighton Cup – The overall winner of Classes 1, 2, 3, 4 & 5 Purchaser of the Supreme Champion to Receive	£200	
Class 10	Reserve Champion		£50
Class 11	Best OTM Beast (p/kg)	£30	£20
Sheep Classes:		<u>1st</u>	<u>2nd</u>
Class 12	Best Pen of 5 Lambs under 40kg	£30	£20
Class 13	Best Pen of 5 Lambs 40kg or above	£30	£20
Class 14	Best Pen of 4 Smallholder's/YFC Lambs	£30	£20
Class 15	Champion Pen of Lambs - The overall winner of Classes 10, 11 and 12	£150	
Class 16	Reserve Champion Pen		£50
Class 17	Brian Meredith Cup for Best Single Lamb	£50	£30
Class 18	Best Pen of 4 or more cull ewes (£/head)	£30	£20

Canteen Mince pie and mulled wine to be served during the morning for all buyers and vendors

**Contact: Mark Burgoyne 07831 192603, Martin Clack 07977 067519
or Ollie Clack 07891 343673**